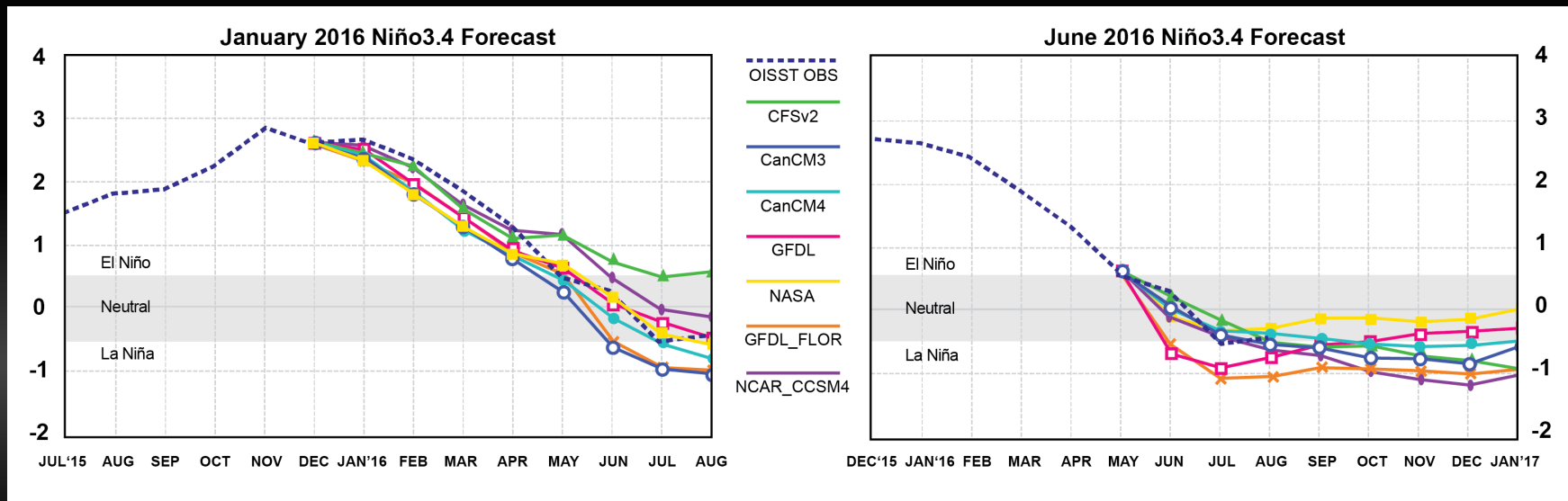


## NASA/GMAO Pulls the Plug on La Niña



Beginning from the January 2016 forecast, most models predict a similar decline in SST anomaly through April. However, from May to August, some models either get too warm or too cold, *while the GMAO and GFDL forecasts follow the observations very accurately*. At 9-months out, GMAO is predicting a shift towards neutral conditions which is also seen in the observations. In the June 2016 NMME forecasts, *GMAO was an outlier in forecasting neutral ENSO conditions from August 2016 through January 2017*. Other than GFDL, all models are still forecasting La Niña. The latest September 2016 NMME Forecast now shows all centers converging to a neutral ENSO prediction from Nov 2016 to Apr 2017.